

DATA ACQUISITION

Wireless sensor: TM6650

Radio frequency Communication
Monitoring
Easy to install : no cable
Automatic Configuration

SIMPLE AND WIRELESS SOLUTIONS FOR YOUR MEASUREMENTS:

Designed for monitoring and data logging , they perfectly fit not only for healthcare businesses, but also for industrial applications.

Configuration is performed by addressing each module from a computer.

Each module can repeat data from other modules automatically according to the dimension of the complete system.



Temperature: TM66501T Measurement and monitoring of 1 temperature channel, using PT100 for a better stability and accuracy

Process: TM6650 PRO: Measurement and transmission of data from pressure, ... can also measure doors closing and openings.

Humidity/Temp: TM6650-HR: Module with relative humidity and temperature sensor, type Hygroclip, digital sensor. Sensor is calibrated and is interchangeable. A cable can be used to adapt length.

Alarms: TM6640 AR: Send with output relays ,alarm informations to a phone transmitter and trigger horns and lights.

Radio repeater: TM6650 R: Repeats digital data between receiver and modules, in case of no measurement point is needed.

A complete fleet of modules can have up to 255 addresses. Data are transmitted to the monitoring computer where they are stored. The modem can also store all the data during 2 weeks, in case of computer breakdown.

Applications

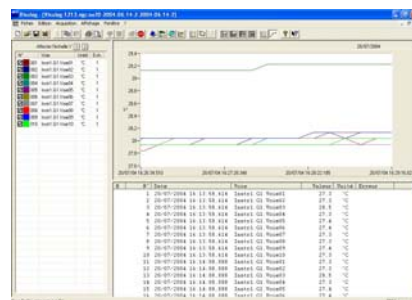
Monitoring

Temperature with door Opening/closing
Display of average, maximum, minimum and standard deviation of each sensor
Display is performed as mimic diagram, curves and values



Control system and environmental monitoring

Real time survey , using Visulog software.
Complete traceability of data and events. This solution can be used also for chambers stability and homogeneity validations



DATA ACQUISITION

Technical specifications:

Temperature with RTD sensor IEC 751

sensor	range	Software resolution	Accuracy @1 year
PT100	- 200 °C to 850 °C	0,01°C	0.1% L+0,3°C
Current	0-24mA	0,01%	0,3%+20µA
Voltage	0-12V	0,01%	0,3%+ 10mV
Humidity/temperature	-40 to 85°C; 0-100% HR	0,01°C/ 0,01%	0,3°C; 1% HR

Power supply

4 batteries AA type; life time 1 year, (embedded battery voltage tester).
Option for supply by main (230v) and rechargeable batteries.

Communication:

ISM radio transmission
200 meters outdoor
Frequency 868 MHz
European conformity:
EN 300-220, EN 301-489

Modem:

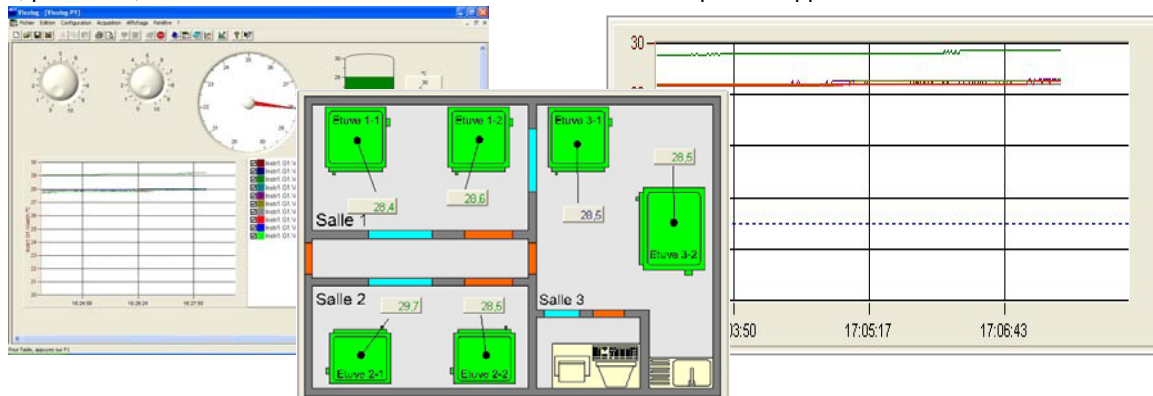
Powered by USB or 4 batteries AA
Memory: 30000 measurements

Data transmission checksum:

Radio transmission protocol include verification of transmitted data . If a received data is false, it is requested once again by modem. Modem also is verifying behaviour and presence of each module installed during commissioning.

Associated software

VISULOG-TM: Monitoring , traceability and real time software,
Login, password, users and administrators functionalities. For CFR21 part 11 applications



VISULOG-web: this software allows distant access through Ethernet, to the Visulog data files, and real time values. Secured access with login and password.

Ordering instructions:

TM6650-1T:	Stand alone temperature sensor delivered with 2 meters Pt100
TM6650 Pro	Sensor for process signal
TM6650 DI/ HR/INT	Sensor Humidity -Temperature
TM6650 DI/ HR/EXT	Sensor Humidity -Temperature with 2 meters cable
TM6640 MM:	USB Modem with memory
TM6640 AR:	Output relay sensor for triggering alarm and flash signals
TM6650 R:	Repeater



AOIP
BP 182
91133 Ris Orangis CEDEX
FRANCE
+33 169 028 900
www.aoip.com



SOFIMAE laboratory on our premises of Ris-Orangis
*Ranges available on www.cofrac.fr